

Kobus Pipe Puller

Summary

Lewis Ltd arranged for a demonstration of the Kobus Pipe puller, inviting all our capital alliance framework contractors along to see the benefits of the system. The Pipe Puller is able to remove ¾" to 1.25", towing in new pipe in situ. This removes the need for excavation along the length of the pipe. A small excavation is undertaken at each end of the section to be removed, the old pipe

cut and then attached to the new pipe at one end, and the puller at the other end. The pipe puller is attached to a mini excavator and operated. A second smaller unit is available that can run from a mini generator – where space may be limited for example.

This technique, is estimated to save more the £250 per service replacement – against traditional open cut carriage crossings.

Key Facts

Client:
EDT Infrastructure

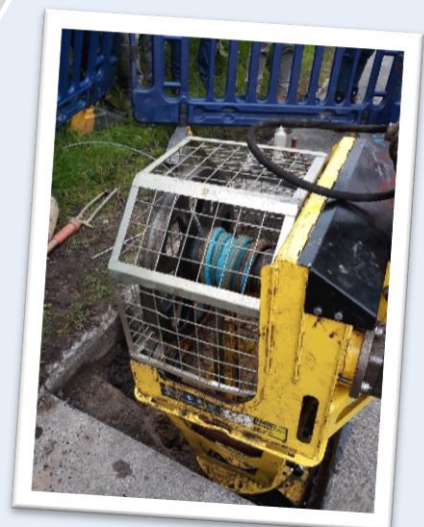
Partner:
KOBUS

Workstream:
EDT

Challenge:
Reducing costs and reduced disruption in removal of small diameter pipes

System:
Kobus Pipe Puller

Key People:
Chris Moore (EDT)
Alex Morgan (Lewis Ltd)



Above: Pipe Puller lowered into place. Right: UPVC pipe being pulled and wound.

The equipment cost is in the region of £28,000 – with minimal servicing required.

Representatives from Lewis Civil Engineering, O'Connor Utilities, Young Bros Civil Engineering and Morrison Utility Services were all present at the demonstration.

More information can be found at: <https://us.kobuspipepuller.com/>

Please do not hesitate to get in touch with Chris Moore or Euan Hampton for more information.