

Pontrhydyfen

Overview:

Site Location:	>> Pontrhydyfen
Client:	>> Dwr Cymru
Contract Value:	>> £205,000
Duration:	>> 10 Weeks

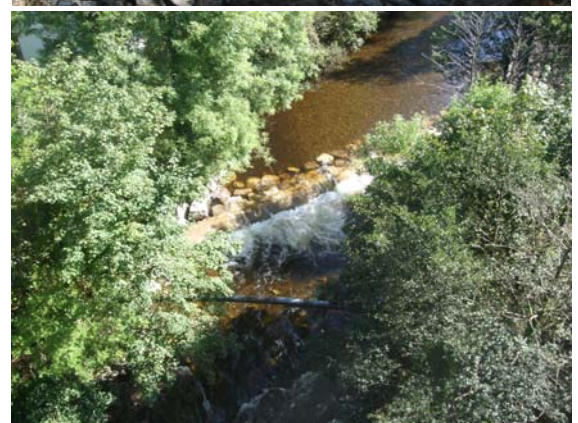
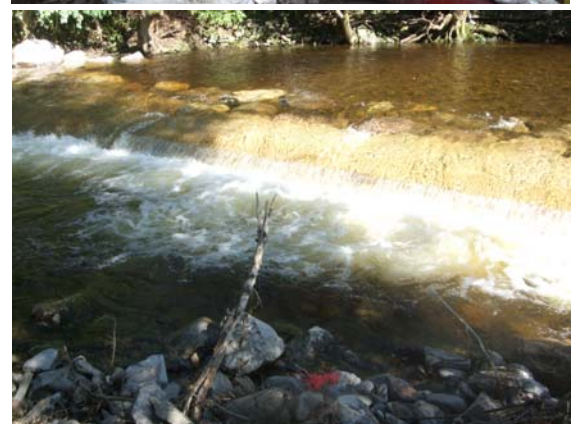
The picturesque village of Pontrhydyfen sits alongside the Richard Burton Trail and adjacent to the steep sided River Afon valley. The river had previously been crossed with a 600m dia Dwr Cymru pipeline that had been constructed to act as a weir. Over time this asset had become badly scoured and was at risk of rupture - we were engaged to re-construct the pipeline and structure to avoid a potentially serious environmental incident.

Access was via a steep sided wooded valley embankment through which we had to cut a suitable haul road on to the narrow flood plain to the southern side of the river—the northern side being steeper and totally inaccessible.

An elaborate overpumping system was devised and installed to isolate the existing main and transfer flows across the river utilising the existing highway bridge, thus removing the risk of losing the overpumping during high river levels - a mitigation measure well utilised as the river is prone to flash flooding and in fact we were unable to access the river for several weeks during construction.

The river was bunded to divert flows using blockstone and river bed material to seal the voids and a silt curtain was installed downstream - also, all excavators were converted to Green hydraulic oil to remove environmental risks.

The pipeline was installed and the new weir formed around it using reinforced concrete and blockstone to prevent future scour issues.



Lewis Civil Engineering Ltd, Mwyndy Cross Industries, Cardiff Road, Pontyclun, Rhondda Cynon Taff. CF72 8PN

Telephone: 01443 449 200 Fax: 01443 449 201

Website: www.lewis-ltd.co.uk E-mail: enquiries@lewis-ltd.co.uk