

Grove Road, Bristol

Overview:

Site Location:	>> Grove Road, Bristol
Client:	>> Wessex Water
Contract Value:	>> £650,000

The Grove Road scheme was part of the AMP5 Bristol CSO improvement programme.

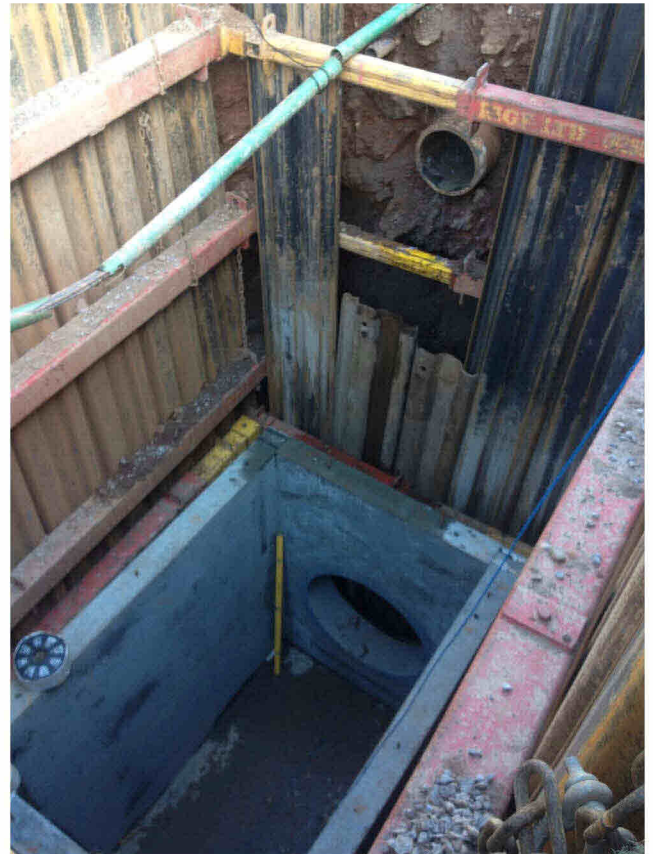
The scheme significantly improved the operation of three CSOs within the vicinity of Grove Road, Fishponds, Bristol, and involved:

- upsizing of approximately 210m of existing 375mmØ sewer to 525mm
- amendments to 3No CSOs
- CPM flat pack Chamber
- section of 50m of 1200mmØ online storage with Hydroslide control

Grove Road is a narrow residential street lined with terraced houses on both sides of the road. Construction space was extremely limited and barely wider than the 20t excavator used to install the pipe.

The new sewer was installed online, approximately 3-4m below the level of the existing system, at depths of approximately 6m in competent rock.

Excavator mounted breakers and rockwheels were employed to maximise construction outputs.



Through early contractor involvement Lewis Civil Engineering recommended that, due to existing services and limited road space, the downstream chamber should be designed as a prefabricated unit. CPM supplied the flat-pack unit shown above which neatly fitted within specially designed temporary works between the existing services located on 3 sides of the chamber.



The scheme was completed under a road closure. Close liaison with the local highway officer, local residents, local businesses and a school was necessary to ensure disruption was kept to a minimum.

Ultimately, the success of the scheme is testament to the knowledge, skill and determination of the site delivery team.

