

Burger King, Swansea

Overview:

Site Location:	>> Burger King, Swansea
Client:	>> Dwr Cymru Welsh Water
Contract Value:	>> £49,000
Project Duration:	>> 3 Weeks

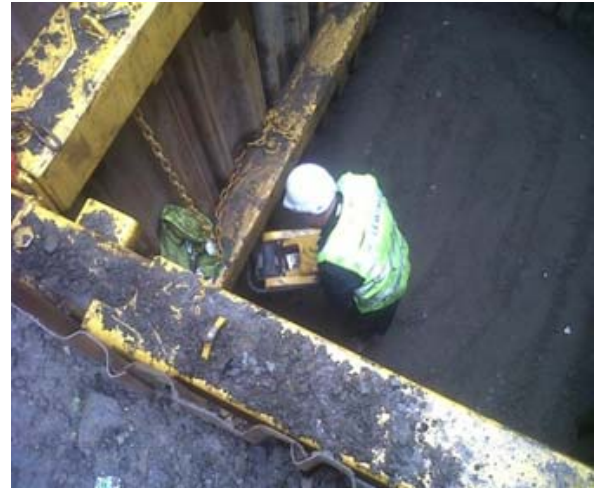


Category Deep Sewer Repairs

Lewis Civil Engineering Ltd, were engaged by DCWW under their reactive planned maintenance framework to repair 225mm sewer collapse 6m deep and adjacent to a busy Burger King, Drive Thru. The initial collapse and its over pumping were set up by operations prior to involving us.

Once on site, we had the proposed temp works design from MGF approved and checked by third party as the depth of excavation was in the region of 6.5m.

This design involved using long length sheet piles and 3no frames next to the busy Burger King drive thru! To install these safely following consultation with Burger King we commenced the installation and excavation during night shift to minimise any business loss and its respective compensation.



Once all temp works were installed and excavated we repaired the collapsed clay 225mm sewer using like for like pipe and flexi couplers. Before the repair was carried out we pushed our CCTV camera upstream to understand the condition of remaining 18m of sewer and ensure no more collapses before backfilling operations commenced. The excavation was then backfilled with type 1 sub base, compacted and temp works removed.



Lewis Civil Engineering Ltd, Mwyndy Cross Industries, Cardiff Road, Pontyclun, Rhondda Cynon Taff. CF72 8PN

Telephone: 01443 449 200 Fax: 01443 449 201

Website: www.lewis-ltd.co.uk E-mail: enquiries@lewis-ltd.co.uk